

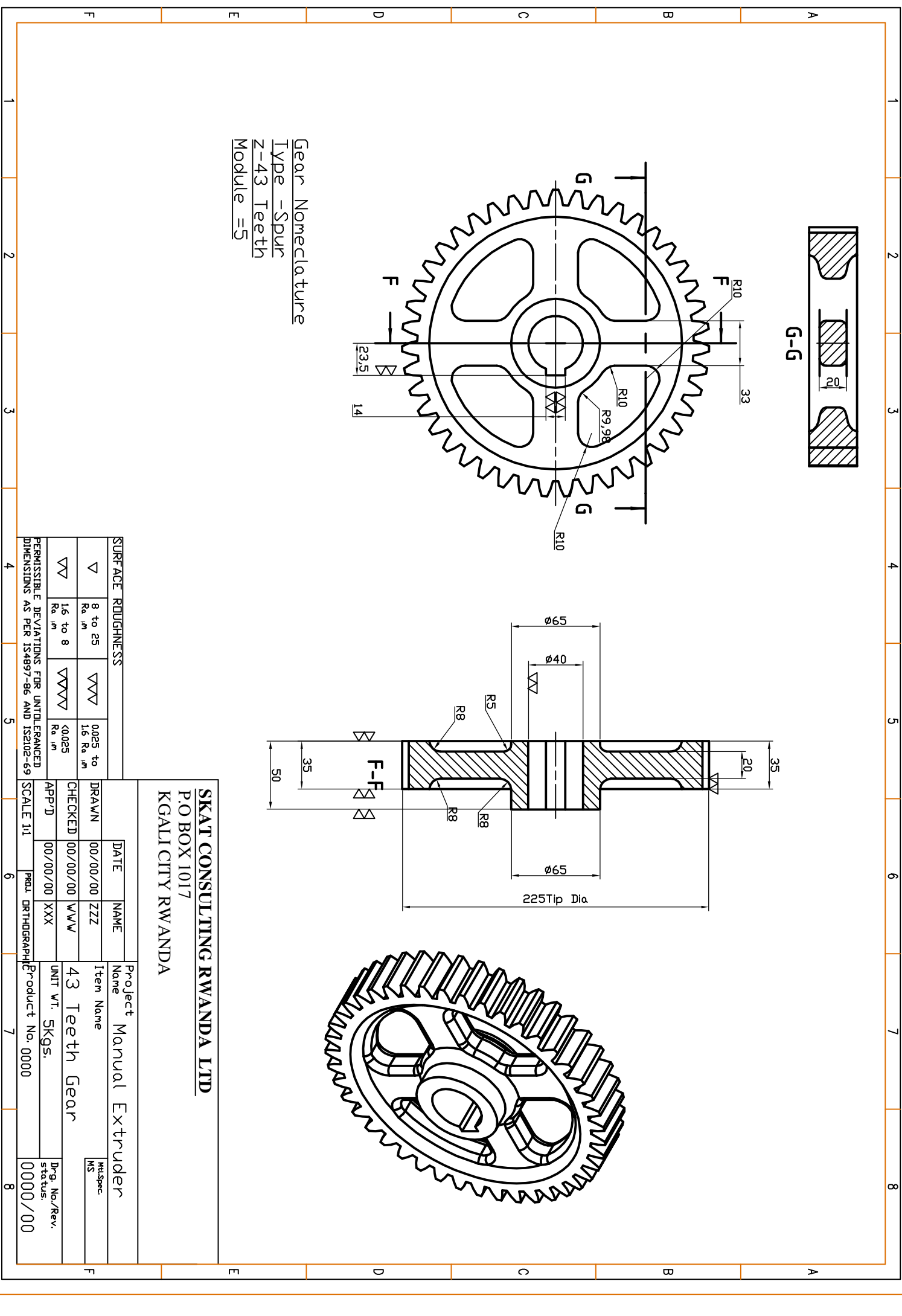
Gear Nomenclature  
 Type - Spur  
 z-43 Teeth  
 Module =5

**SKAT CONSULTING RWANDA LTD**  
 P.O BOX 1017  
 KIGALI CITY RWANDA

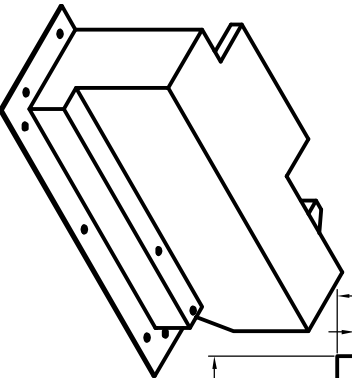
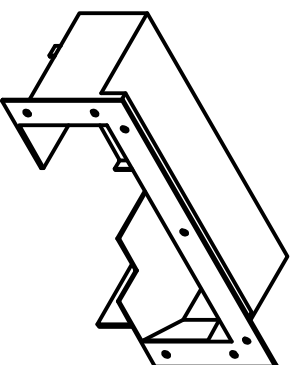
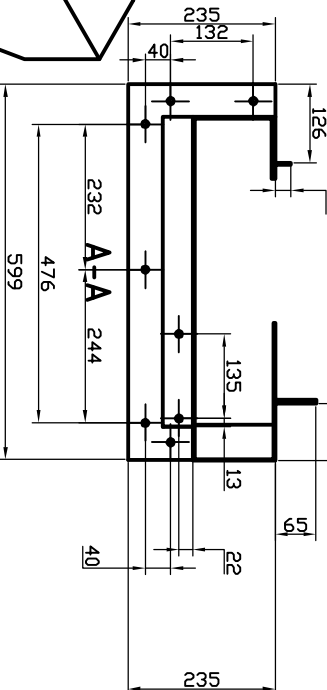
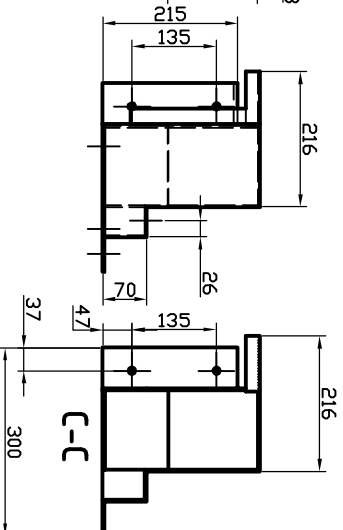
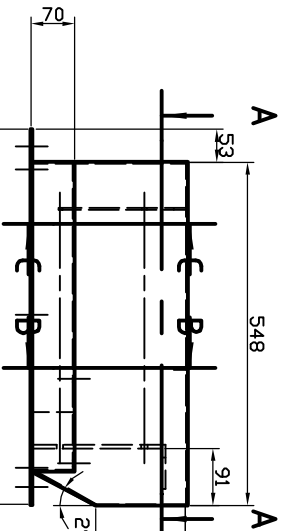
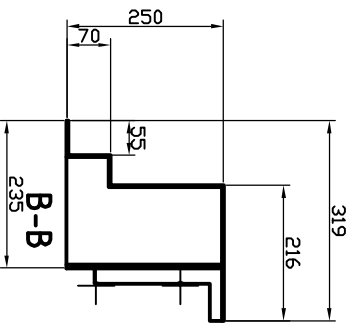
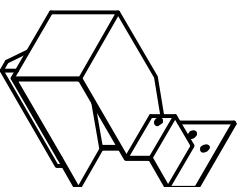
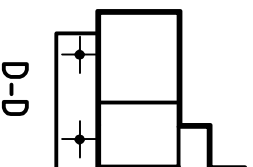
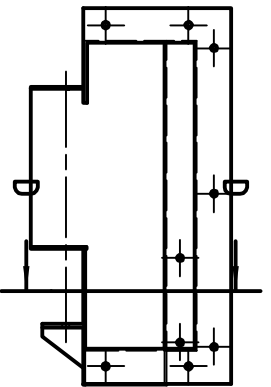
SURFACE ROUGHNESS	
▽	8 to 25 Ra, μm
▽▽	0.025 to 1.6 Ra, μm
▽▽▽	<0.025 Ra, μm

DATE	NAME	Project Name	Manual Extruder
DRAWN	00/00/00	Item Name	43 Teeth Gear
CHECKED	00/00/00	UNIT WT.	SKGS.
APP'D	00/00/00	Product No.	0000/00
DATE	NAME	Project Name	Manual Extruder
DRAWN	00/00/00	Item Name	43 Teeth Gear
CHECKED	00/00/00	UNIT WT.	SKGS.
APP'D	00/00/00	Product No.	0000/00

PERMISSIBLE DEVIATIONS FOR UNTOLERANCED DIMENSIONS AS PER IS4897-86 AND IS2102-69



FABRICATE  
ALL CONNERS AND JOINTS  
TO FILLET WELD BY R5

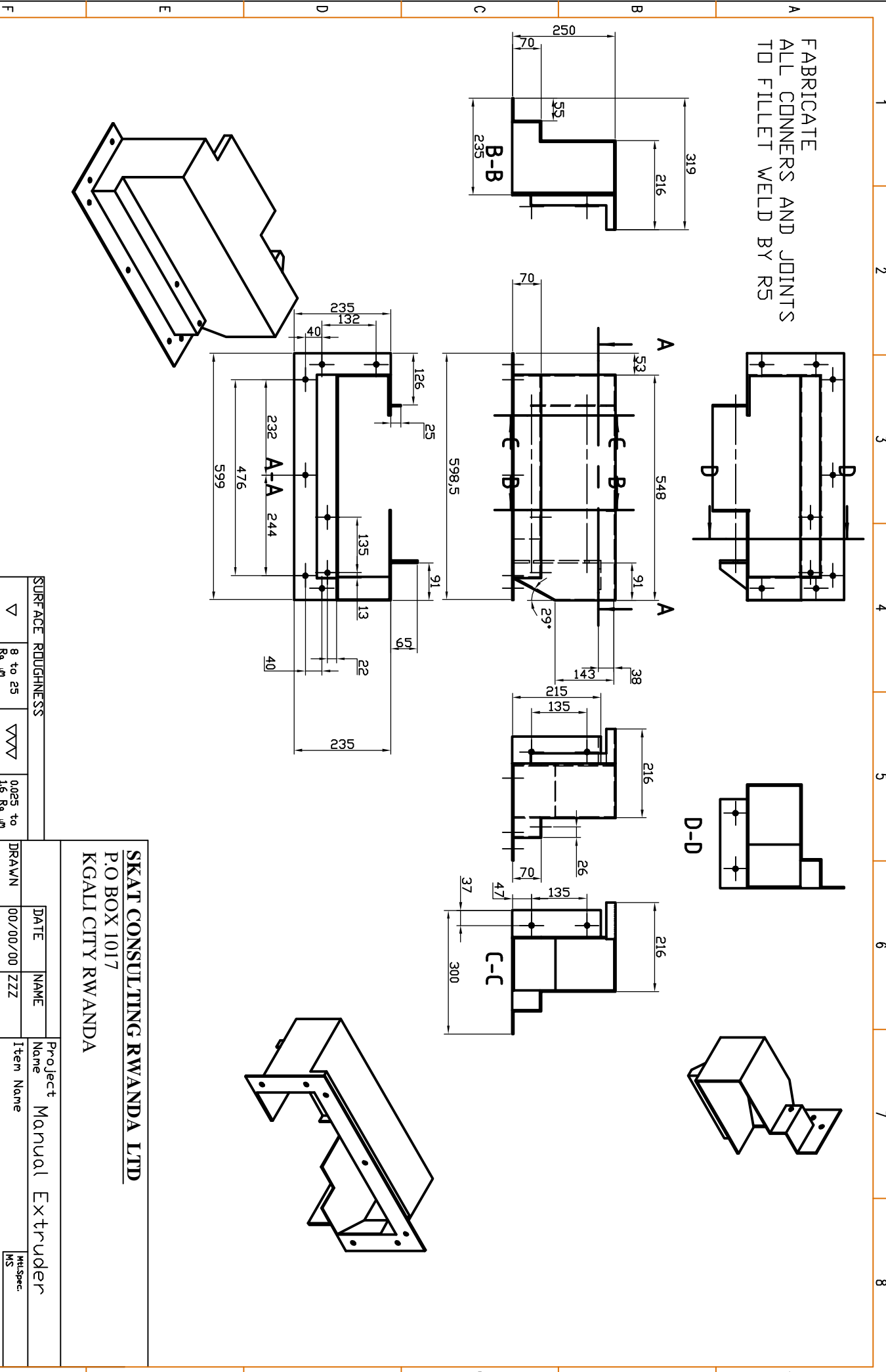


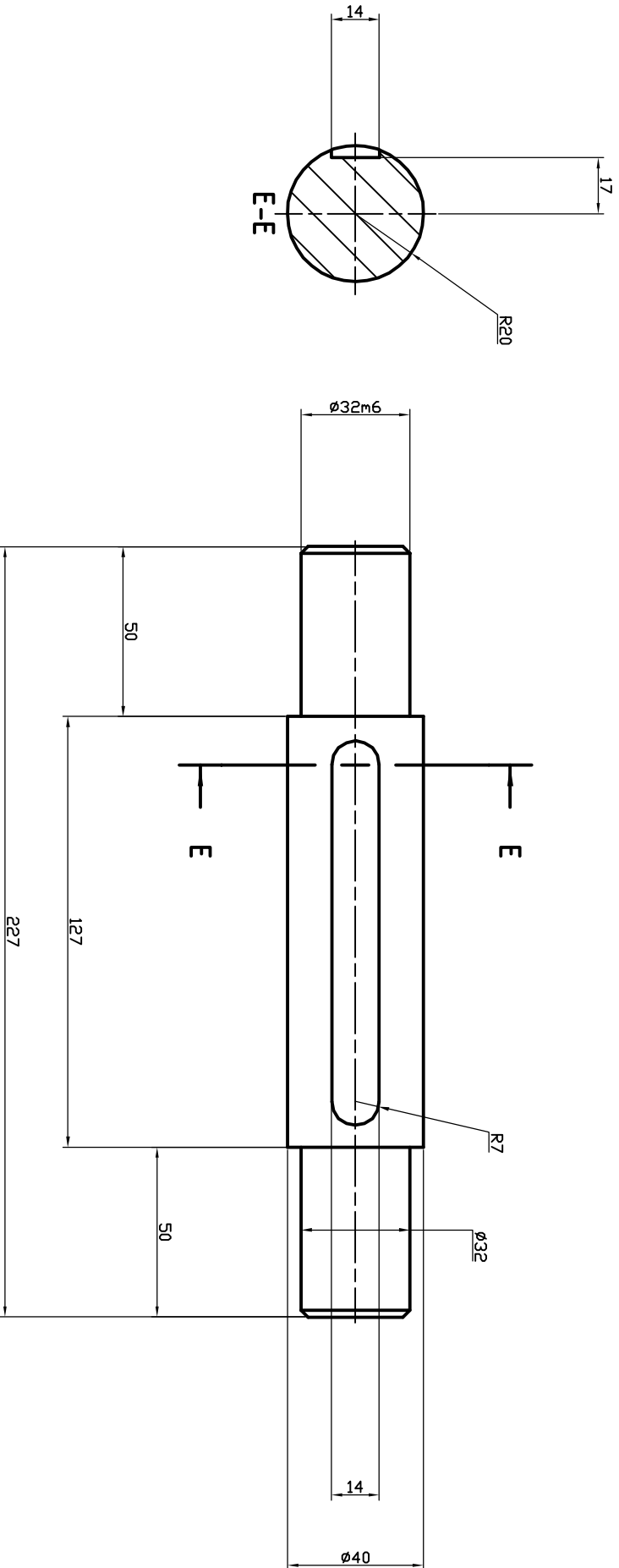
**SKAT CONSULTING RWANDA LTD**  
P.O BOX 1017  
KGALI CITY RWANDA

SURFACE ROUGHNESS	
▽	8 to 25 Ra, μm
▽▽	0,025 to 1,6 Ra, μm
▽▽▽	<0,025 Ra, μm

DATE	NAME	Project Name
00/00/00	ZZZ	Manual Extruder
00/00/00	WWW	Item Name
00/00/00	XXX	UNIT Wt. 16Kgs.
SCALE 1:1	Prod. DRTHDGRAPPH	Product No. 0000
		Dwg. No./Rev. status: 0000/00

PERMISSIBLE DEVIATIONS FOR UNTOLERANCED DIMENSIONS AS PER IS4897-86 AND IS2102-69





**SKAT CONSULTING RWANDA LTD**  
 P.O BOX 1017  
 KGALI CITY RWANDA

SURFACE ROUGHNESS			
▽	8 to 25 Ra, μm	▽▽▽	0.025 to 1.6 Ra, μm
▽▽	1.6 to 8 Ra, μm	▽▽▽▽	<0.025 Ra, μm

DATE	NAME	Project Name	Manual Extruder
DRAWN	00/00/00	Item Name	HTS
CHECKED	00/00/00	UNIT WT.	1 SKGS.
APP'D	00/00/00	Product No.	0000/00
SCALE 1:1	Produ. DRTHDRGAPP		

