

SURFACE ROUGHNESS	
▽	8 to 25 Ra, μm
▽▽	0.025 to 1.6 Ra, μm
▽▽▽	<0.025 Ra, μm

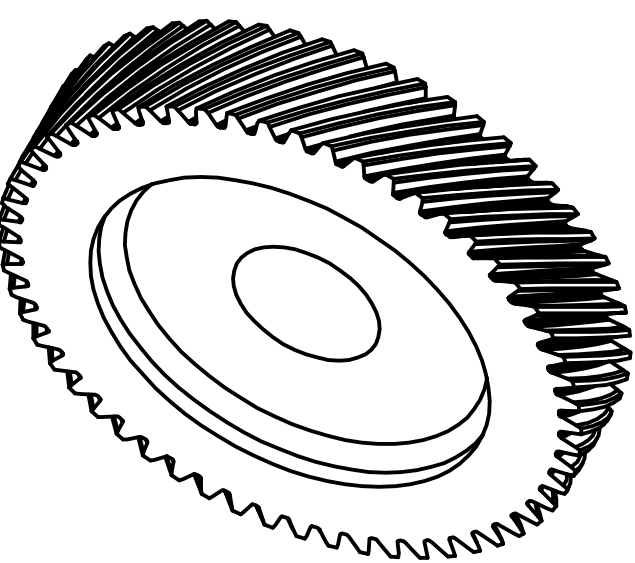
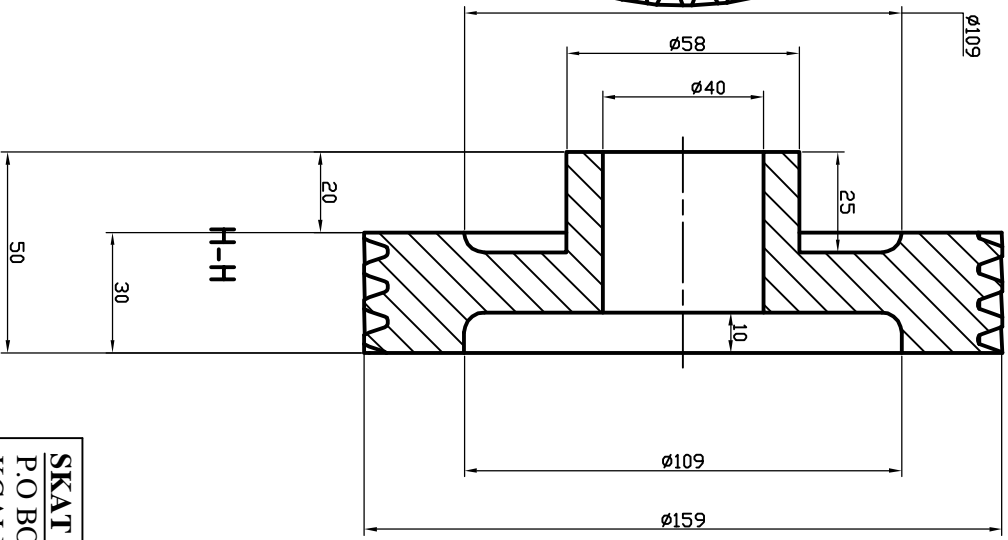
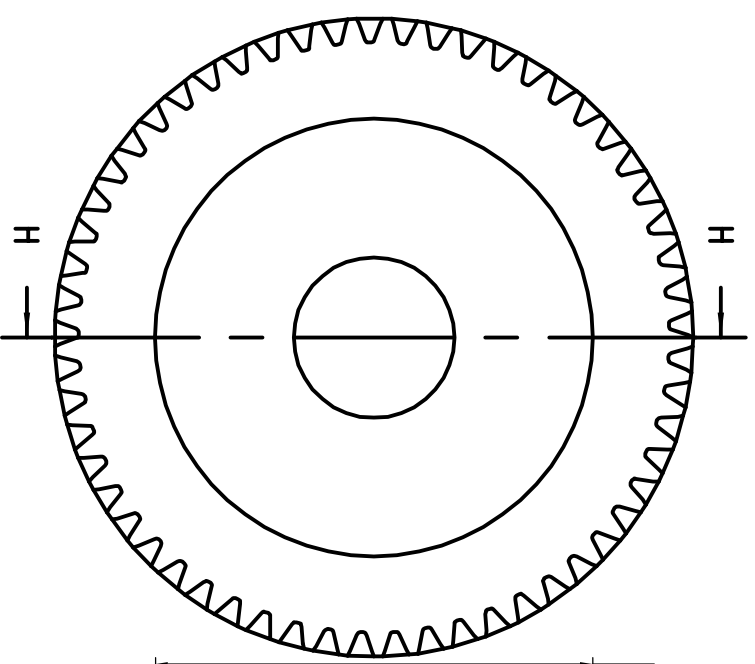
PERMISSIBLE DEVIATIONS FOR UNTOLERANCED DIMENSIONS AS PER IS4897-86 AND IS2102-69

DATE	NAME	Project Name
00/00/00	ZZZ	Motorized Brick Extruder
CHECKED	APP'D	UNIT WT.
00/00/00	XXX	KGS.
SCALE	Produ.	Product No.
1:1	DRTHDGRPH	0000

SKAT CONSULTING RWANDA LTD
 P.O BOX 1017
 KGALI CITY RWANDA

DATE	NAME	Project Name	Item Name	Unit Spec.
00/00/00	ZZZ	Motorized Brick Extruder	Assembly of 2 Gears in upper gearbox Hsg	MS
00/00/00	XXX	Motorized Brick Extruder	UNIT WT.	0000/00

MC/D ALLOVER



Gear Nomenclature
 Type -Helical
 Z-59 Teeth
 Module =2.7
 Helix-36° RH

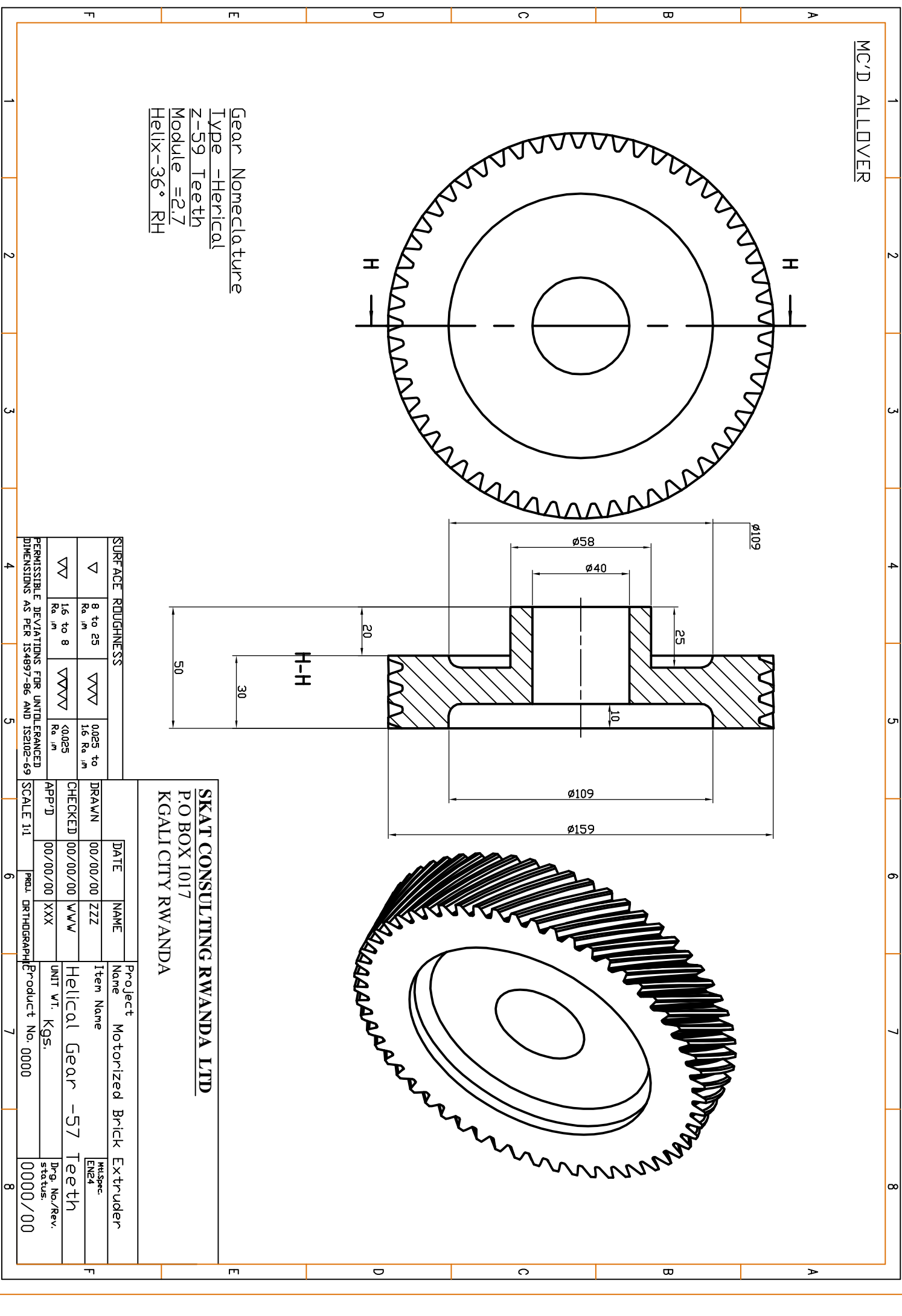
SURFACE ROUGHNESS

▽	8 to 25 Ra, μm	▽▽▽	0.025 to 1.6 Ra, μm
▽▽	1.6 to 8 Ra, μm	▽▽▽▽	<0.025 Ra, μm

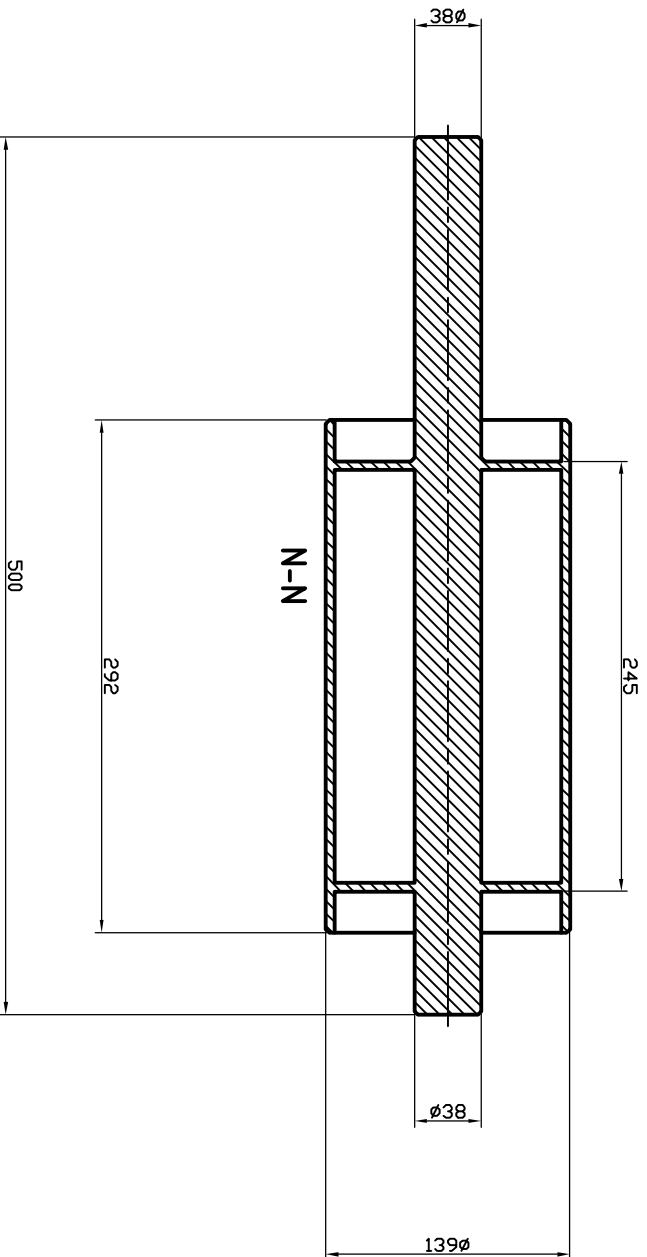
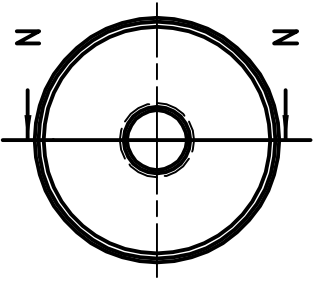
PERMISSIBLE DEVIATIONS FOR UNTOLERANCED DIMENSIONS AS PER IS4897-86 AND IS2025-69

SKAT CONSULTING RWANDA LTD
 P.O BOX 1017
 KGALI CITY RWANDA

DATE	NAME	Project Name	Motorized Brick Extruder
DRAWN	00/00/00	Item Name	Helical Gear -57 Teeth
CHECKED	00/00/00	UNIT WT.	KGS.
APP'D	00/00/00	Product No.	0000/00
SCALE 1:1	PREP. DRTHDGRPH	Drwg. No./Rev. status:	0000/00



FABRICATE / MACHINE
ALL CONNERS AND JOINTS
TO FILET WELD BY R5



SKAT CONSULTING RWANDA LTD
P.O BOX 1017
KGALI CITY RWANDA

SURFACE ROUGHNESS	
▽	8 to 25 Ra, μm
▽▽	0.025 to 1.6 Ra, μm
▽▽▽	<0.025 Ra, μm

DATE	NAME	Project Name
00/00/00	ZZZ	Motorized Brick Extruder
CHECKED	APP'D	UNIT WT.
00/00/00	XXX	8KGS.
SCALE	1:1	Product No.
		0000

F

E

D

C

B

A

F

E

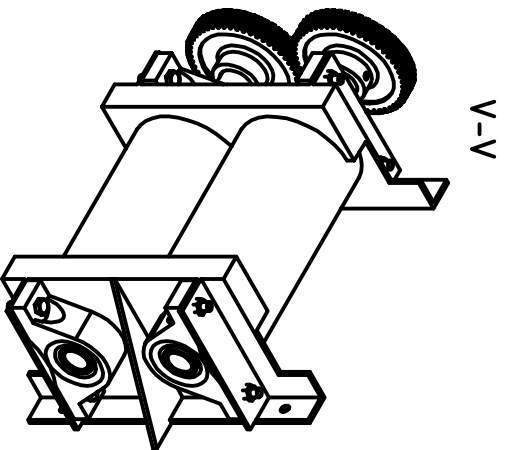
D

C

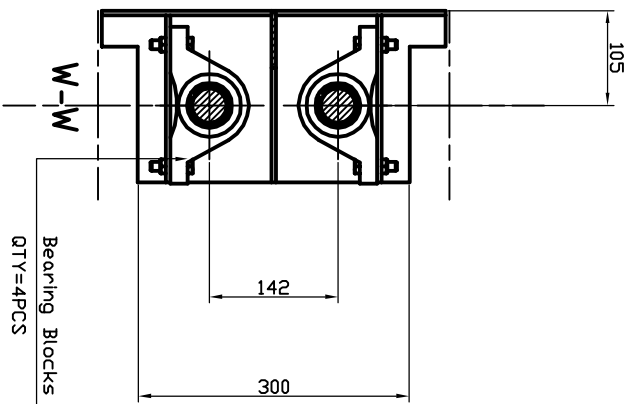
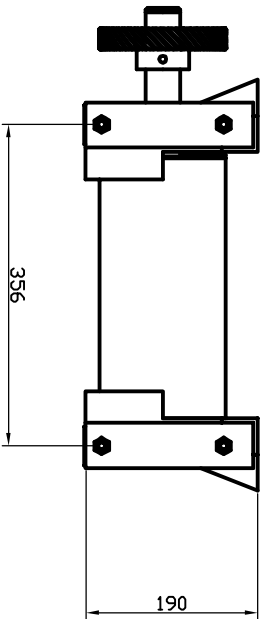
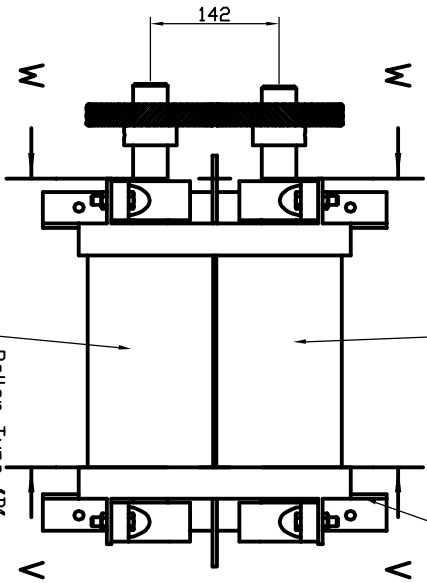
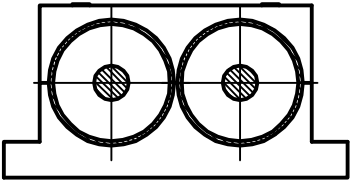
B

A

1 2 3 4 5 6 7 8



V-V



SURFACE ROUGHNESS			
▽	8 to 25 Ra, μm	▽▽▽	0.025 to 1.6 Ra, μm
▽▽	1.6 to 8 Ra, μm	▽▽▽▽	<0.025 Ra, μm

SKAT CONSULTING RWANDA LTD			
P.O BOX 1017			
KGALI CITY RWANDA			
DATE	NAME	Project Name	Motorized Brick Extruder
DRAWN	00/00/00	Item Name	Roller Assembly
CHECKED	00/00/00	UNIT WT.	SKGS.
APP'D	00/00/00	Product No.	0000
SCALE 1:1	PREP. DRTHDGRAPPH	Dwg. No./Rev. status:	0000/00

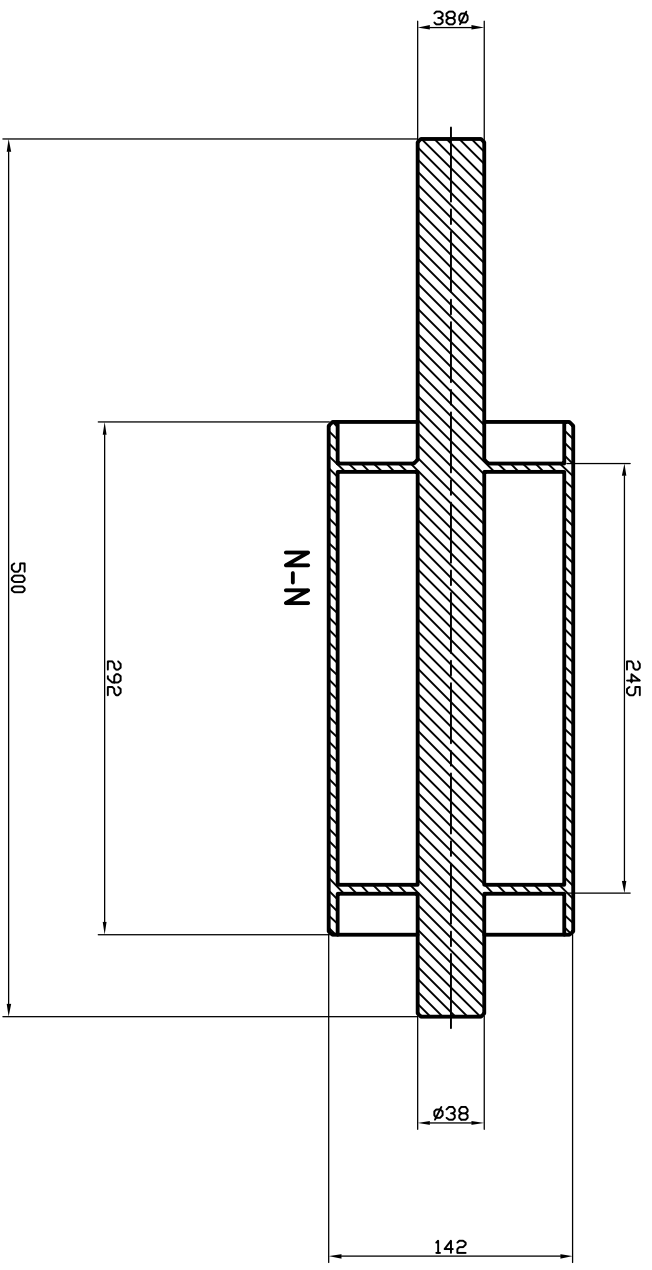
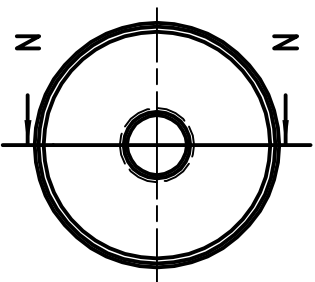
PERMISSIBLE DEVIATIONS FOR UNTOLERANCED DIMENSIONS AS PER IS4897-86 AND IS2102-69

A B C D E F

A B C D E F

1 2 3 4 5 6 7 8

FABRICATE/FABRICATE
 ALL CONNERS AND JOINTS
 TO FILET WELD BY R5

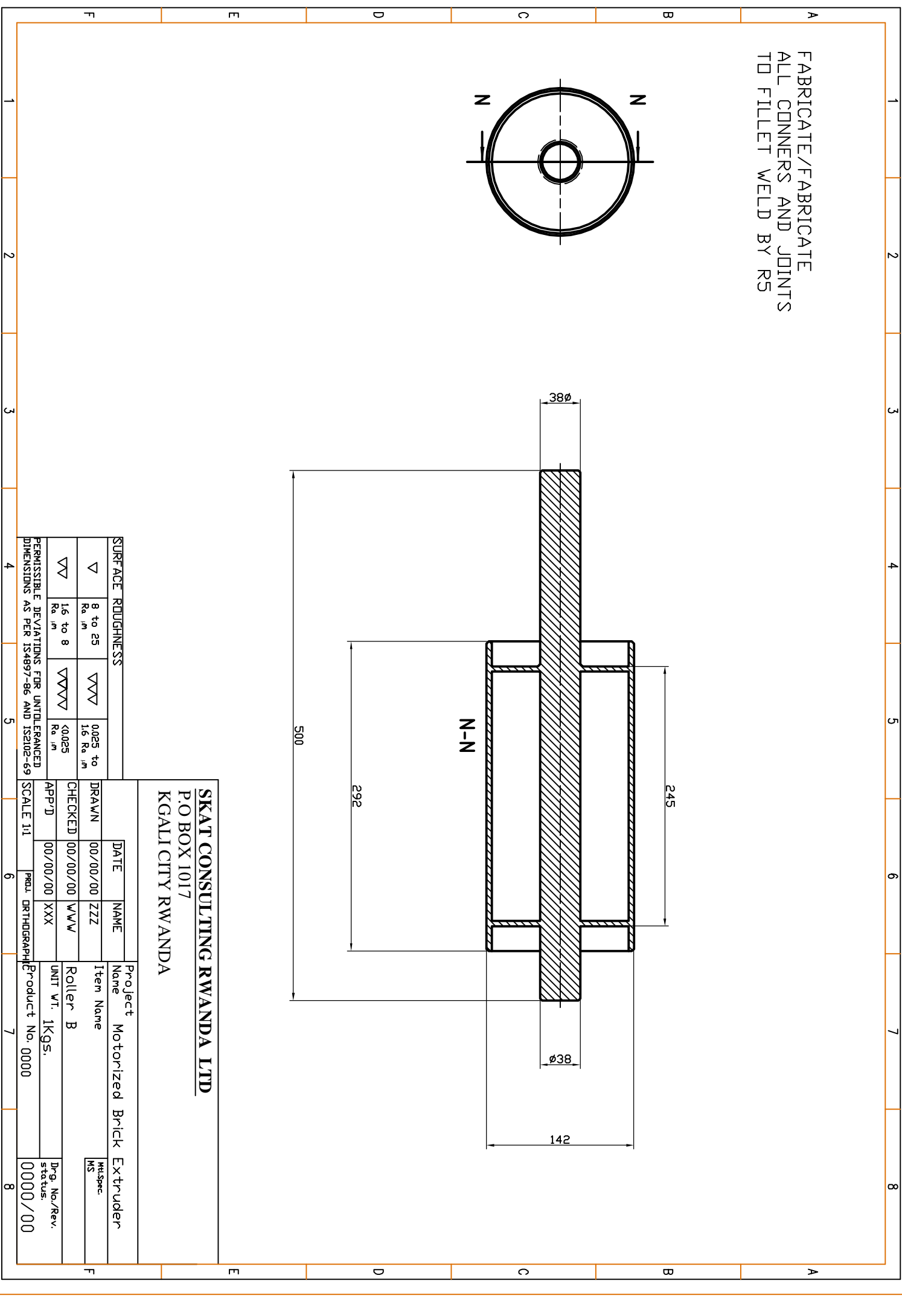


SKAT CONSULTING RWANDA LTD
 P.O BOX 1017
 KGALI CITY RWANDA

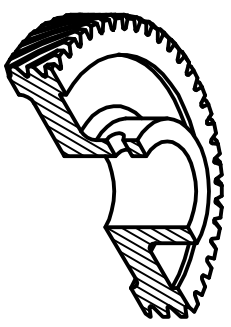
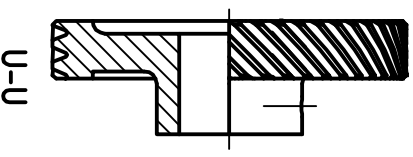
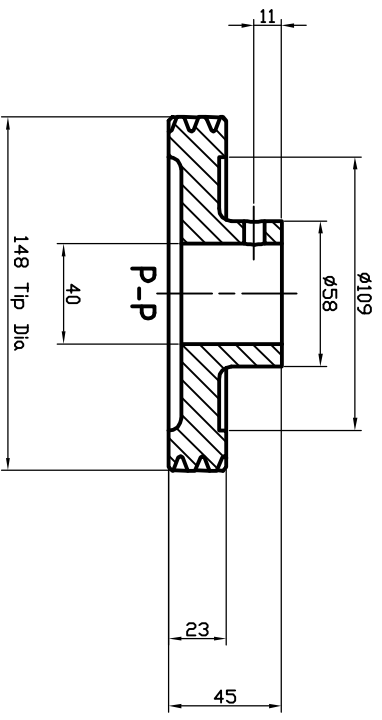
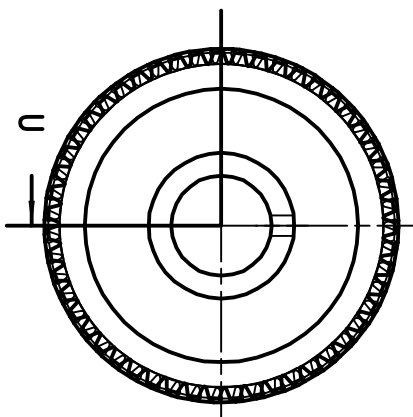
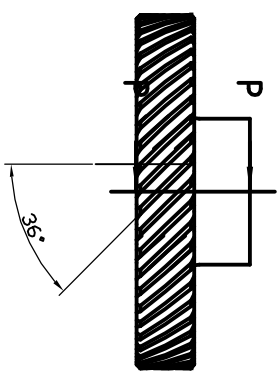
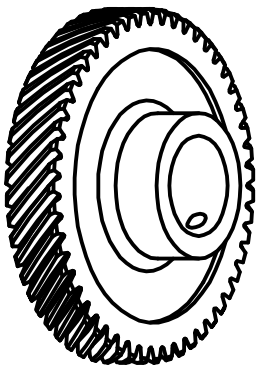
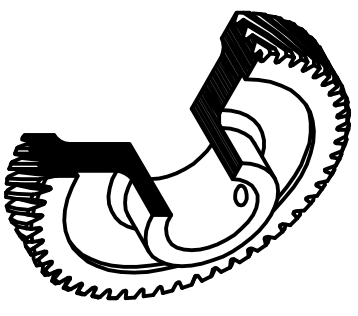
SURFACE ROUGHNESS	
▽	8 to 25 Ra, μm
▽▽	0.025 to 1.6 Ra, μm
▽▽▽	<0.025 Ra, μm

DATE	NAME	Project Name
00/00/00	ZZZ	Motorized Brick Extruder
CHECKED	APP'D	UNIT WT.
00/00/00	XXX	1Kgs.
SCALE	Produ.	Product No.
1:1	DRTHDGRAP	0000

Item Name
 Roller B
 Dwg. No./Rev.
 0000/00



MC/D ALLOVER



Gear Nomenclature
 Type -Helical
 z-51 Teeth
 Module =2.7
 Helix-36° RH

SURFACE ROUGHNESS

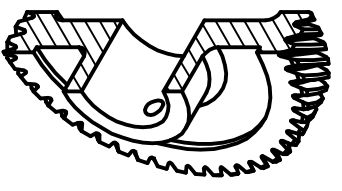
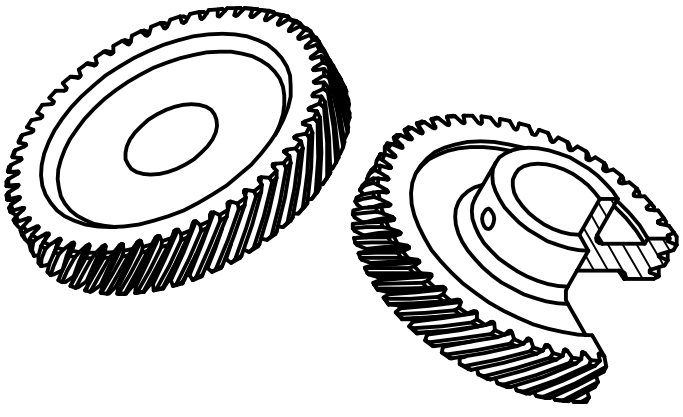
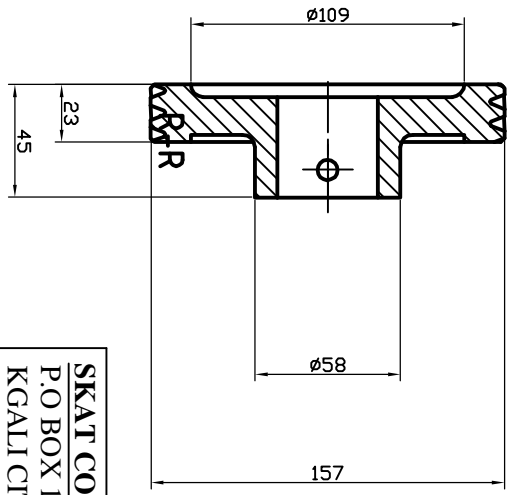
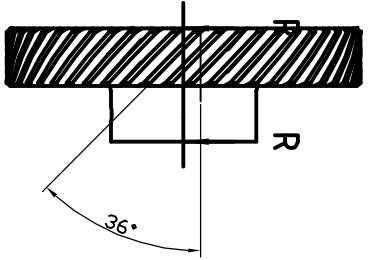
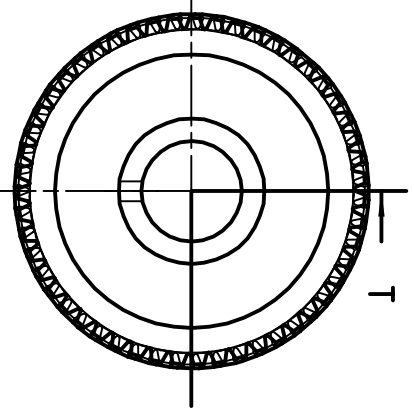
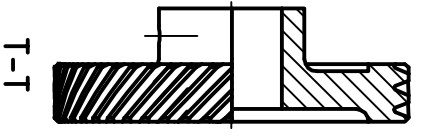
▽	8 to 25 Ra, μm	▽▽▽	0.025 to 1.6 Ra, μm
▽▽	1.6 to 8 Ra, μm	▽▽▽▽	<0.025 Ra, μm

PERMISSIBLE DEVIATIONS FOR UNTOLERANCED DIMENSIONS AS PER IS4897-86 AND IS2102-69

SKAT CONSULTING RWANDA LTD
 P.O BOX 1017
 KGALI CITY RWANDA

DATE	NAME	Project Name	Motorized Brick Extruder
DRAWN	00/00/00	Item Name	
CHECKED	00/00/00	UNIT WT.	SKGS.
APP'D	00/00/00	Product No.	0000/00
SCALE 1:1	PREP. DRTHDGRAPPH	Drng. No./Rev. status:	0000/00

MC/D ALLOVER



Gear Nomenclature
 Type -Helical
 z-57 Teeth
 Module =2.7
 Helix-36° LH

SURFACE ROUGHNESS

▽	8 to 25 Ra, μm	▽▽▽	0.025 to 1.6 Ra, μm
▽▽	1.6 to 8 Ra, μm	▽▽▽▽	<0.025 Ra, μm

PERMISSIBLE DEVIATIONS FOR UNTOLERANCED DIMENSIONS AS PER IS4897-86 AND IS2025-69

SKAT CONSULTING RWANDA LTD
 P.O BOX 1017
 KGALI CITY RWANDA

DATE	NAME	Project Name	Motorized Brick Extruder
DRAWN	00/00/00	Item Name	
CHECKED	00/00/00	UNIT WT.	SKGS.
APP'D	00/00/00	Product No.	0000/00
SCALE 1:1	PREP. DRTHDGRAPPH	Drng. No./Rev. status:	0000/00

